

REAGENT INSTRUCTIONS

1. Carefully open the WIM Scientific Laboratories Reagent's factory seal.
2. Using the provided mini tester spoon, place at least .010 to .005 Grams (**Tiny amount**) of the questionable substance into the empty testing vial.
3. Add one or two drops of the Reagent into the testing vial.
4. Refer to the **color chart** (see reverse side for download link) to determine what is present in the sample.
5. After successfully testing your substance, mini testing spoon and testing vial will need to be completely cleaned and dried before your next use.
6. After testing, the Reagent cap should be closed tightly and placed back into the bag to ensure no leakage or unwanted exposure occurs.
7. Also included are promotional items...because we love you. They may come in handy!

Keep out of direct sunlight and hot temperatures for best results and lasting usage.
Reagent will be good for at least 3-6 months depending on proper storage.

If reagent comes into contact with skin or eyes, wash promptly with soap and water. Latex gloves are highly recommended when handling kits. If irritation persists, receive medical attention immediately.

KEEP OUT OF REACH OF CHILDREN.

Only The Highest Quality Lab Grade Chemicals Used:
ISO 9001 Quality Lab Material Certified



LEIBERMANN COLOR REACTIONS

(Read all instructions on back first)*

SUBSTANCES:

MDMA - Black

Methylone - Yellow to black

Ethylone - Yellow to black

Butylone - Yellow/Green/Brown

MDPV - Yellow to green

Mephedrone - Yellow

Alpha-PVP ("Flakka") - Yellow

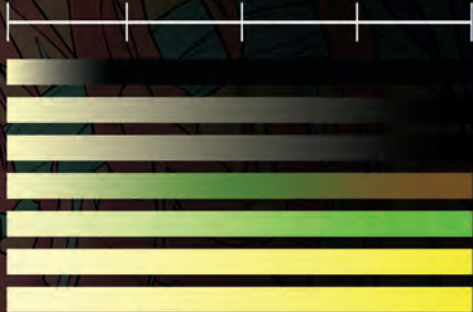
0 min.

1

5

10

15



* In conjunction with our other reagent kits, Liebermann can help identify certain cathinones ("bath salts") and other new psychoactive substances.

WIM Scientific Laboratories LLC™
info@wimscilabs.com

